

**EXTERNAL OVERHEAD
EQUIPMENT**

POLE HANDLING

INSTALLATION EQUIPMENT

POLE FURNITURE

BLOCK TERMINALS

AERIAL CABLES, WIRES & ROPES

TOOLS & ACCESSORIES

External Overhead

STRAP TENSIONING 1A

3 metre webbing strap, complete with twist snap hook. Tensioner 3A to be ordered separately

EA1069



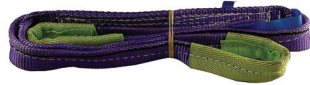
SLING LIFTING

Flat webbing strap, safe working load of 1000kg, supplied in the following sizes:

EA1059 Sling Lifting 4A (1m)

EA1060 Sling Lifting 5A (2m)

EA1061 Sling Lifting 6A (3m)



SLING LIFTING 10A

Circular 3m sling, used for safe pole handling

EA1058



LADDER TIE

Used to lash Ladders Extension 5B and 7A when working on poles

EA1039



POLE SOCK

Pole sock used to cover ends of telegraph poles

EA1090



SHOVEL HOLER HANDLE

Replacement handle for wooden shafted shovel holers, supplied as each.

EA1080



SPOON EXCAVATING

Spoon shaped tool used when excavating holes for poles. Supplied with either wooden or fibreglass handles.

EA1023 Spoon Excavating (wooden)

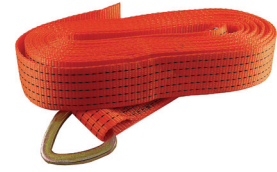
EA1204 Spoon Excavating (fibreglass)



STRAP TENSIONING 2A

9 Metre webbing strap, terminated with a 'D' buckle. Tensioner 3A to be ordered separately.

EA1070



TENSIONER 3A

Used to ratchet Straps Tensioning 1A and 2A

EA1073



SLING WIRE ROPE 1A

Pole handling wire sling, complete with reeving thimbles on each end. Total length 1.4 metres, with a safe working load 1.4 tons.

EA1062



POLE JACK

Pole jack hand operated, chain to be ordered separately

EA1044



CHAIN POLE JACK

High tensile link chain for use with Pole Jack

BAR OPERATING LARGE

High tensile steel bar used to operate Pole Jack

EA

SHOVEL HOLER

Double shovel with scissor action, used when excavating poles. Supplied with either wooden or fibreglass handles

EA1093 Shovel Holer (wooden)

EA1056 Shovel Holer (fibreglass)



BAR DIGGING

General purpose digging bar, can be used for levering or tampering when excavating holes for poles. Available with either fibre glass or steel handles.

EA1200 Bar Digging (fibreglass)

EA1002 Bar Digging (steel)



PUNNER HALF MOON

Used for back filling earth around poles. Supplied with either steel or fibre glass handles

- EA1048 Punner Half Moon (steel)**
- EA1091 Punner Half Moon (fibreglass)**

Moon (steel)

SCREW COACH 3"

Used to attach Steps Pole to Poles. Screw size 3" x 3/8"

CP5066



SPADE RABBITING

Used on pole installations. This tool has a long elongated blade, especially useful in conditions of wet clay and tree roots. Supplied with either steel or fibre glass handles.

- EA1063 Spade Rabbiting (steel)**
- EA1064 Spade Rabbiting (fibre glass)**



PLATE BEARING NO.1

Implement to prevent the stay being driven too deep when installing Anchor Stay Manual No.1

EA1202



PROBE POLE TEST

Hardened steel 10" tool used to detect external decay on wooden poles

EA1045



STEPS POLE NO.1

Wooden pole step, installed by means of Screw Coach

EA1067



BLOCK INSERT

Block Inserts for use with Block Terminal 66B. Supplied as 4 way or 6 way

- EA1003 Block Insert 1A (4 way)**
- EA1004 Block Insert 2A (6 way)**



PUNNER IRON

Square head 10lb punner, supplied with either steel or fibre glass handles.

- EA1049 Punner Iron (steel)**
- EA1092 Punner Iron (fibre glass)**



BRACE COACH SCREW

Hand held brace, used to attach and remove Steps Pole from poles

EA1013



HORSE POLE

Used to support poles during dressing, current specification includes flat feet and can be folded flat

EA1033



HAMMER SLIDE NO.1

Used when installing Anchor Stay Manual No.1

EA1030

ANCHOR STAY MANUAL NO.1

EA1001



RING POLEHEAD DROPWIRE

Used with clamps dropwire on pole installations

EA1053



BLOCK TERMINAL 66B

Typically used when terminating 2 and 5 pair insulated cable conductors.

EA1007



External Overhead

MOUNTING BLOCK TERMINAL 1A

Mounting bracket used when attaching 76 series Block Terminals to wooden poles

EA1042

MOUNTING BLOCK TERMINAL 2A

For use with 86 series Block terminals

EA1043



BOX CONNECTION 16A

Terminal box supplied in the following colours:

- EA1008 Black**
- EA1009 Brown**
- EA1010 Cream**
- EA1011 Grey**
- EA1012 White**



GRIP WIRE SUSPENSION NO.1

Used on single strand suspension wires, not for use at power crossings

EA1084

GRIP WIRE SUSPENSION NO.4

Used on the span side of Insulator Stay No.2 at power crossings, not used on cables that incorporate single strand suspension wire

EA1085



BLOCK TERMINAL 18A

20 pair terminal block, can be either wall or pole mounted. Connector Modules to be ordered separately

EA1005



BLOCK TERMINAL 19A

As Block Terminal 18A, but a 10 pair version

EA1006

CONNECTOR MODULE 1A

Module for use with Block Terminals 18A and 19A

EA1023



GRIP WIRE SUSPENSION NO.3

Used on the span side of Insulator Stay No.2, for use on cables that incorporate a single strand suspension wire.

EA1081



GRIP INSULATOR POLE

Can be used at power crossings, and terminate Insulator Stay 2 to poles where stays have insulators inserted.

EA1082

LINE SASH NO.2

Polypropylene rope 4mm, used when installing dropwire, useful when laid across roads due to its 'dead' property.

EA1041

LINE SASH 15

Polypropylene rope 8mm diameter, supplied on a hank of 50m

EA1040



GRIP PULLING AERIAL CABLE

Used for the installation of aerial cables, sometimes referred to as a 'come-along'. supplied in 2 sizes:

EA1028 GPAC 2A 4-12mm

EA1029 GPAC 3A 3-9mm



TENSIONER 2B

Used for the erection and recovery of aerial cables, used with Grip Pulling Aerial Cable

EA1072



HOOK TEMPORARY HOLD NO.2

Hook supplied complete with strap

EA1032



TENSIONER WIRE STAY

Used for tensioning stay wires

EA1075



STRAP TEMPORARY HOLD NO.1

Used with Hook Temporary Hold No.1, supplied with a ratched buckle and is 700mm in length

EA1068



TELENCO HOOK AERIAL CABLE

'J' type hook used as a support for aerial cables

EA1088



PULLEY DROPWIRE NO.4

Snatch block type pulley, used when installing dropwire

EA1046



INSULATOR STAY NO.2

Used on overhead stays near to power lines or suspension routes.

EA1034



PULLEY DROPWIRE NO.5

Similar to Pulley Dropwire 4, but includes a clam cleat

EA1047



DROPWIRE 10B

2 pair Cable Dropwire, tinned copper conductors and separate strength member

EA1026



DROPWIRE 14

A 4 pair version of Dropwire 10B

EA1027

BRACKET 32

A bracket that incorporates an extended arm, where clearance from gutterings and eaves is needed.

EA1014



BRACKET 22

Used to fix Clamps Dropwire on buildings and poles

EA1015

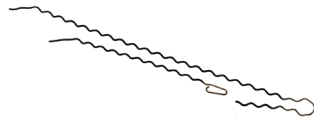


External Overhead

CLAMP DROPWIRE 10A

Dropwire clamp for use with cable dropwiring, two types illustrated:

- EA1022 Dropwire 10A**
- EA1201 Dropwire No.6**



DISPENSER SASH LINE

Sash line dispenser, incorporates a revolving drum on a spindle

- EA1025**



CAPPING PVC

Cable protection capping, two sizes supplied:

- EA1016 Capping 22**
- EA1017 Capping 25**



SLEEVING No.12

Coils of PVC tubing available in the following two sizes

- EA1084 Sleevling 15mm**
- EA1083 Sleevling 22mm**



TWISTER POLE (hook type)

For the alignment of poles after erection

- EA1076**



LADDER EXTENSION 5B

3 part aluminium telecom pole ladder, supplied complete with pole bracket and lashing rope (Ladder Tie)

- EA1036**

LADDER EXTENSION 7A

As Ladder Extension 5B, but manufactured from fibre glass

- EA1037**

EYEBOLT EXPANDING

Fixing bolts supplied in 2 common sizes

- CP5055 Eyebolt Expanding 1A**
- CP5056 Eyebolt Expanding 2A**



SLEEVE DROPWIRE PROTECTION 2A

Small protection sleeve 35mm in length, used on Cable Dropwire

- EA1057**



CAPPING STEEL

Used to protect cables from 19mm up to 76mm, 3 sizes of Capping Steel supplied:

- EA1018 Capping Steel No.1 (up to 19mm)**
- EA1019 Capping Steel No.4 (19-51mm)**
- EA1020 Capping Steel No.5 (51-76mm)**



TWISTER POLE (plate type)

Plate type pole twister, used to align poles after installation

- EA1077**



DISPENSER DROPWIRE 2B

Dropwire dispenser, new type complete with wheels and extendable trolley handle
EA1024



SPANNER CRANKED 10mm

Combination spanner 10mm, used on EyeBolt Expanding 1A
EA1065



STRIPPER DROPWIRE 10

Dropwire stripping tool
EA1071



SPLITTER CABLE SHEATH 13

Alternative tool for stripping outer sheath on Dropwires
EA1066



RIGGING HEAD 1A

For use on hollow poles during the installation of dropwire
EA1051



RIGGING WEIGHT 1A

Used in conjunction with Rigging Head 1A
EA1052



RODS TELESCOPIC

A fibre glass height measuring rod, measures heights up to 7 metres
EA1055



RODS PRUNING

General purpose pruning rods, to be ordered in the following component parts:

- EA1100** Rod Pruning Top
- EA1101** Rod Pruning Middle
- EA1102** Rod Pruning Bottom
- EA1103** Rod Pruning Saw
- EA1104** Rod Pruning Shears

SUPERULE HEIGHT MEASURE

Digital height measuring device, typically, 3 sizes are supplied for telecoms use. For comprehensive product details, please contact our sales dept.

TE7092



CHM190
CHM300
CHM600

TELENCO CABLE CLAMP

Cable clamps for use on the Telenco system, available in 2 sizes

- EA1096** Clamp 10-20 pair
- EA1095** Clamp 20-50 pair



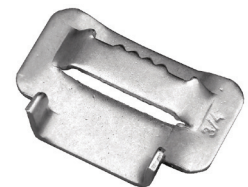
TELENCO BANDING TOOL

Banding tool for use on the Telenco system
EA1094



TELENCO MOUNTING BRACKET

EA1091



KIT 267A

Sets of rivets and washers, Rivitter 1A to be ordered separately
EA1035



External Overhead